



COMPASS
AUCTIONS & REAL ESTATE
www.SoldonCompass.com

Property Address:

9420 US Hwy 23 S.
Stanville, KY 41659

List Price:

Contact Agent

Parcel Tax ID:

094 10 01 009 00 and
094 10 01 005 00

Highlights:

- ◆ 1.65+/- Acres
- ◆ 7,000+ SF of Improvements
- ◆ 20,000+ Daily Traffic Count
- ◆ Multiple Parking Spaces

Compass Auctions & Real
Estate

Agent License # 219747
1233 Sandy Valley Rd.
Hendersonville, TN 37075

Office: (615) 507-5984

Fax: (423) 702-6179

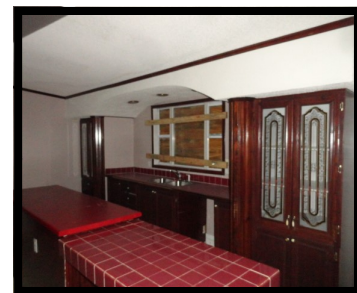
Email:

Jochs@SoldonCompass.com

FOR SALE

9420 US Hwy 23 S. Stanville, KY

Compass Auctions & Real Estate



Property Description: 1.65+/- acres fronting busy Hwy 23 in Stanville, KY. Over 7,000 SF of modular office and storage space with ample parking. Annual average traffic counts over 20,000 per day. Excellent investment opportunity for office, retail and/or mixed use project. Selling on behalf of the United States Marshal's Service.