

THE MASTERPIECE AT MAPLETON



530
S. Mapleton
Drive

LOS ANGELES, CA

RE/MAX ONE



www.reallook.com

THE MASTERPIECE AT MAPLETON

This expansive 33,652 sq ft home features 11 bedrooms, 27 bathrooms, luxurious outdoor pool, pool house and a basement on a flat 1.2 acre lot.

This spectacular home has immaculate curb appeal, complete privacy, circular motor court, and 6 car (or more) garage.

Upon entering the home you are presented into the expansive foyer with a grand double staircase to the upper tier of the estate. Witness the stars and sky's specialty glass ceiling featured at the top of the entry..



INTRODUCING

530 S Mapleton Dr

LOS ANGELES, CALIFORNIA

Tucked behind private gates on one of the most coveted streets in Los Angeles, this Holmby Hills Estate has a story to tell - Let It Be Yours! A stunner from the outside, a blank canvas on the inside, waiting for anything and everything a heart desires.



11 BEDS

—

27 BATHS

—

33,652 SQ FT

—

1.2 ACRE LOT



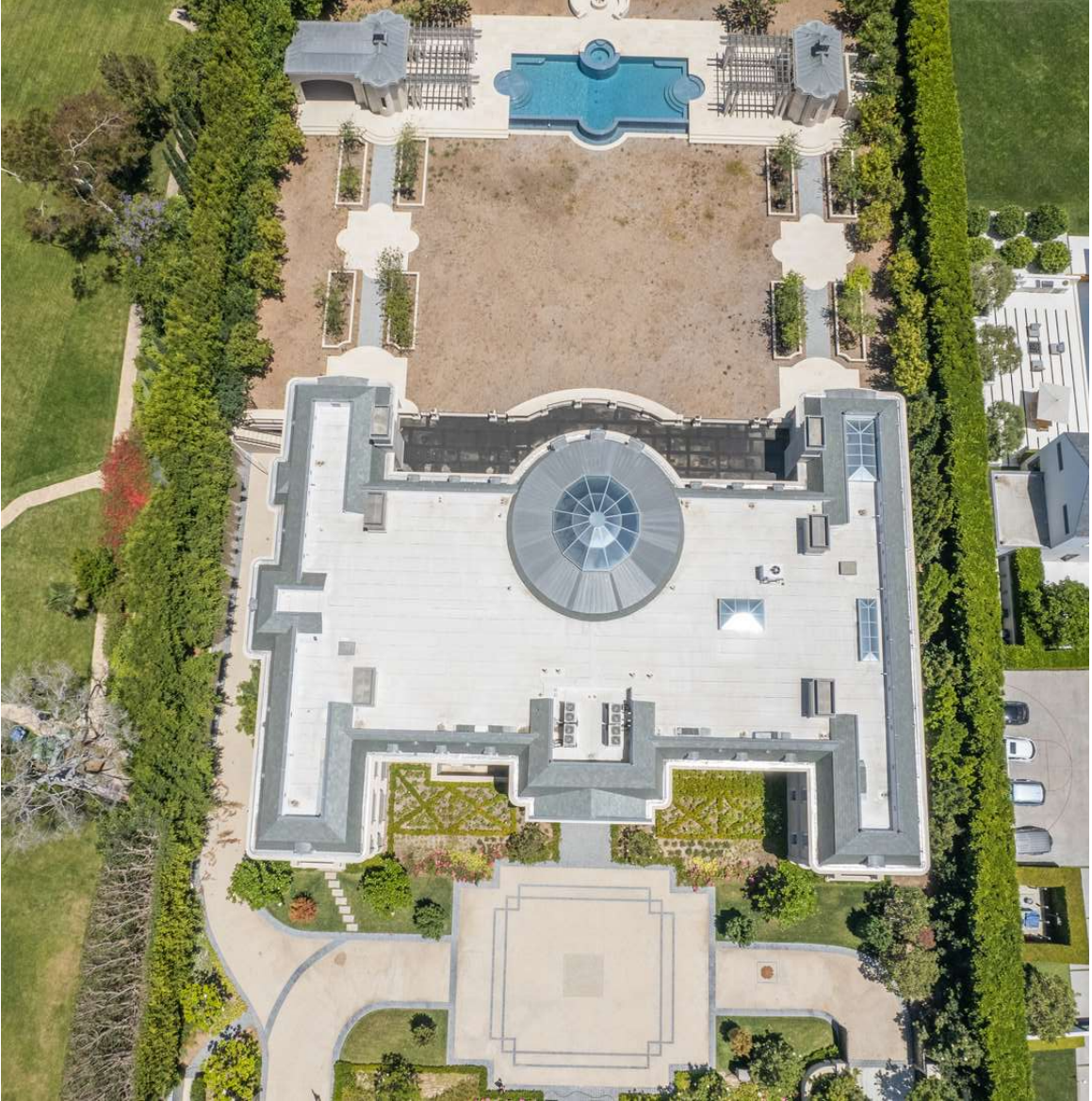


The design of the home is for entertaining with a desired open floorplan looking out to the expansive backyard and pool, under the immense covered patio or walk up the grand stairway out on to the balcony to views outward.



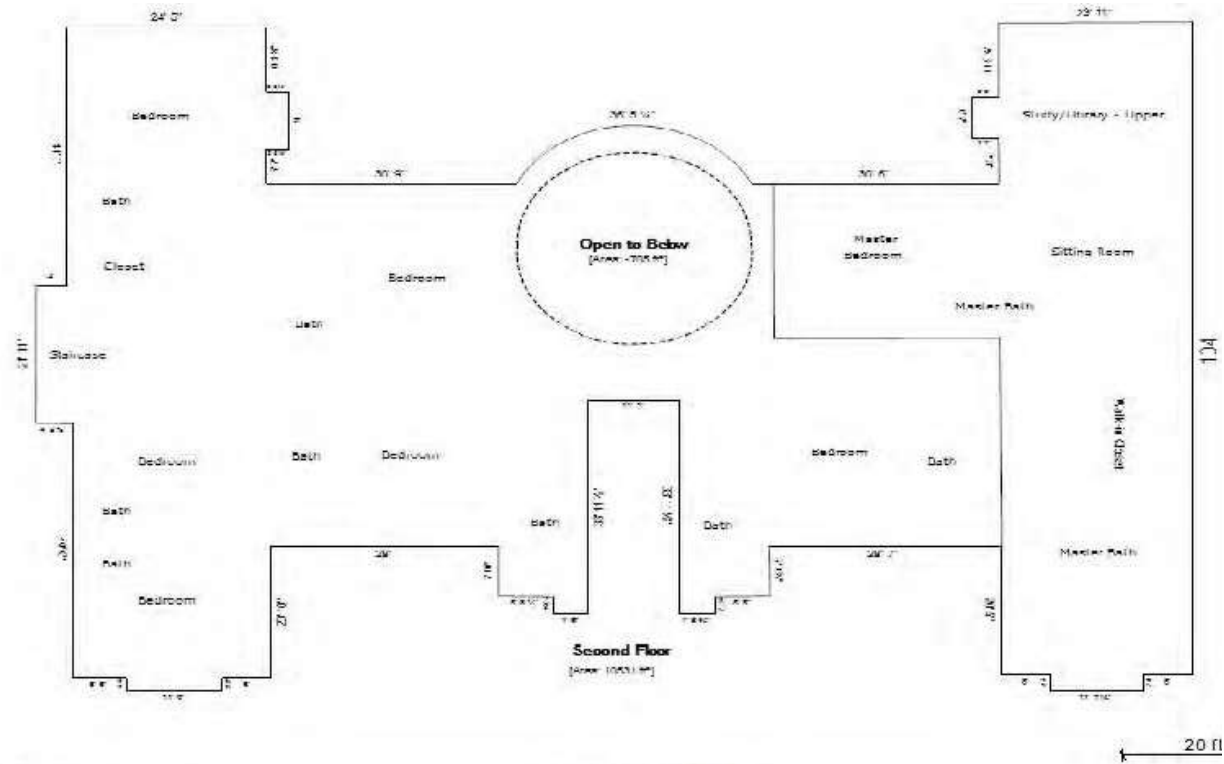
Many of the sleeping quarters are smartly perfect with his and hers en-suites. The arrangement of rooms are ready for your own personal design and style preferences. Other features consist of separate staff quarters with a full kitchen, basement with additional rooms and an indoor space for a bath house. This home is an opportunity to write your own story and live the dream in this spectacular estate!





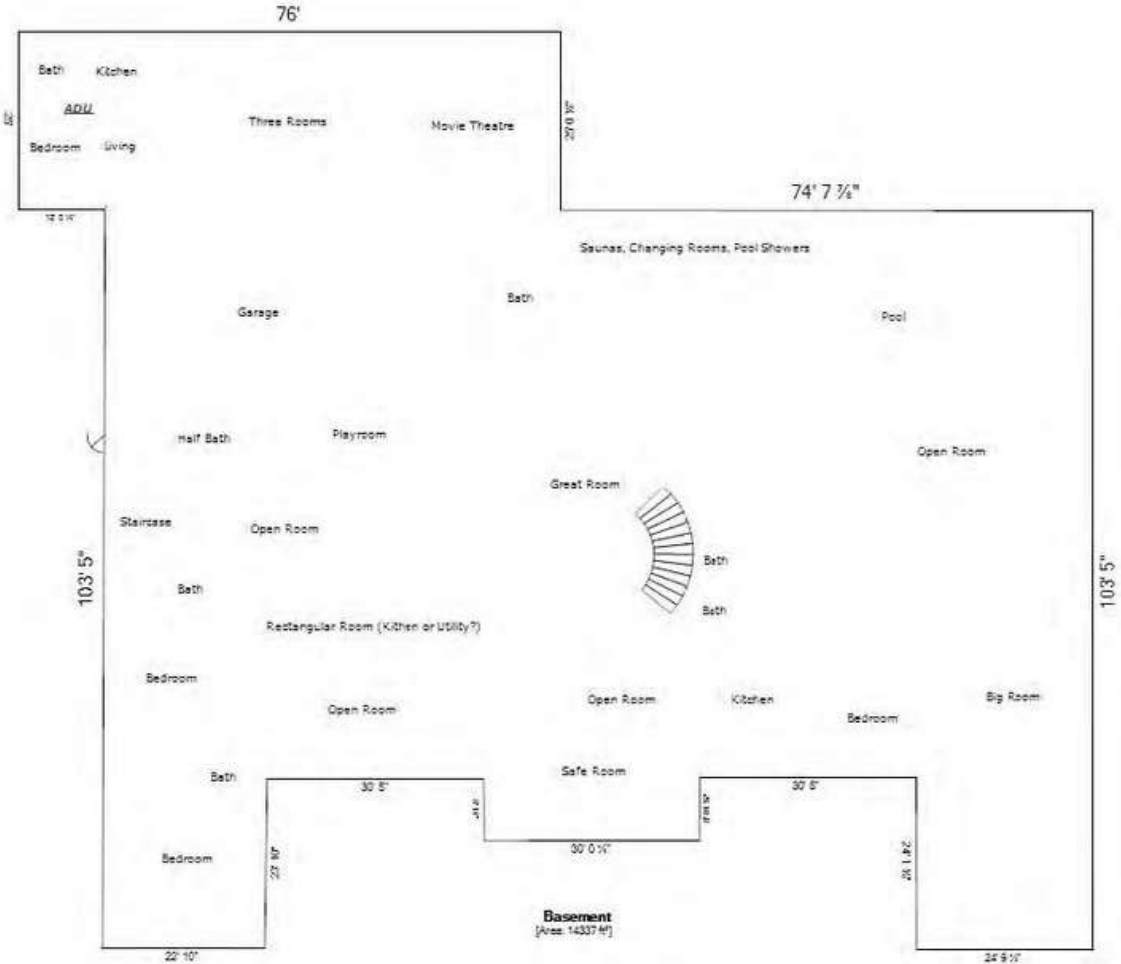
FLOORPLAN

2ND FLOOR



Living Area	Area Calculation		
second floor	10530.99 ft ²	Second Floor	x 1.00 = 1
Open to Below	-704.00 ft ²		-

BASEMENT





RE/MAX ONE



www.reallook.com

LOIS GERACE
ESTATE AGENT
CalDRE# 00923315
818.519.5870



6355 Topanga Canyon Blvd., Suite 100 Woodland Hills, Ca 91367

DARRIN KENNEDY
ESTATE AGENT
CalDRE# 00989120



6324 Canoga Ave., Suite 100 Woodland Hills, Ca 91367